

THESE DRAWINGS CAN NOT BE USED, COPIED, TRACED OR REPRODUCED, IN WHOLE OR PART OR MANNER WHAT SO EVER WITHOUT PERMISSION FROM BRIAN J. PILLING, AIA



BRIAN J. PILLING, AIA  
736 RIDGE POINT DRIVE  
COROLLA, NC 27927  
PHONE 252-202-7550  
obxarchitect@gmail.com  
www.intelligenthouseplans.com

LOCAL PROFESSIONAL'S SEAL

**MCCULLEN RESIDENCE**  
ARIAL VIEW & FRONT ELEVATION

EVERY ATTEMPT HAS BEEN MADE IN THE PREPARATION OF THESE DRAWINGS TO AVOID MISTAKES. THE DESIGNER, OR ANYONE ASSOCIATED WITH THE DESIGNER, WILL NOT BE HELD LIABLE FOR ANY ERRORS OR OMISSIONS IN THESE DRAWINGS

REVISIONS	
NO	DATE/DESCRIPTION

DATE  
PLAN NUMBER

SHEET NUMBER

**IHP-1**



① AERIAL



② FRONT ELEVATION  
1/4" = 1'-0"

SECOND FLOOR  
11' - 0"

FIRST FLOOR  
0' - 0"

THESE DRAWINGS CAN NOT BE USED, COPIED, TRACED OR REPRODUCED, IN WHOLE OR PART OR MANNER WHAT SO EVER WITHOUT PERMISSION FROM BRIAN J. PILLING, AIA



① EXTERIOR PERSPECTIVE 1



SECOND FLOOR  
14' - 2 3/4"

13' PLATE  
13' - 0"

10' PLATE  
10' - 0"

9' PLATE  
9' - 0"

FIRST FLOOR  
0' - 0"



BRIAN J. PILLING, AIA  
736 RIDGE POINT DRIVE  
COROLLA, NC 27927  
PHONE 252-202-7550  
obxarchitect@gmail.com  
www.intelligenthouseplans.com

LOCAL PROFESSIONAL'S SEAL

PITTMAN RESIDENCE  
FRONT PERSPECTIVE & RIGHT SIDE

EVERY ATTEMPT HAS BEEN MADE IN THE PREPARATION OF THESE DRAWINGS TO AVOID MISTAKES. THE DESIGNER, OR ANYONE ASSOCIATED WITH THE DESIGNER, WILL NOT BE HELD LIABLE FOR ANY ERRORS OR OMISSIONS IN THESE DRAWINGS

REVISIONS	
NO	DATE/DESCRIPTION

DATE  
PLAN NUMBER

SHEET NUMBER

IHP-2

LOCAL PROFESSIONAL'S SEAL

**NOVISKIE RESIDENCE**  
 REAR PERSPECTIVE & LEFT SIDE

EVERY ATTEMPT HAS BEEN MADE IN THE PREPARATION OF THESE DRAWINGS TO AVOID MISTAKES. THE DESIGNER, OR ANYONE ASSOCIATED WITH THE DESIGNER, WILL NOT BE HELD LIABLE FOR ANY ERRORS OR OMISSIONS IN THESE DRAWINGS.

REVISIONS	
NO.	DATE/DESCRIPTION

DATE  
 PLAN NUMBER

SHEET NUMBER

**IHP-3**



② EXTERIOR PERSPECTIVE 2



① LEFT ELEVATION  
 1/4" = 1'-0"

THESE DRAWINGS CAN NOT BE USED, COPIED, TRACED OR REPRODUCED, IN WHOLE OR PART OR MANNER WHAT SO EVER WITHOUT PERMISSION FROM BRIAN J. PILLING, AIA

THESE DRAWINGS CAN NOT BE USED, COPIED, TRACED OR REPRODUCED, IN WHOLE OR PART OR MANNER WHAT SO EVER WITHOUT PERMISSION FROM BRIAN J. PILLING, AIA



3 INTERIOR PERSPECTIVE "B"



4 INTERIOR PERSPECTIVE "C"



2 INTERIOR PERSPECTIVE "A"



1 REAR ELEVATION  
3/16" = 1'-0"

LOCAL PROFESSIONAL'S SEAL

LANCASTER RESIDENCE  
INTERIOR PERSPECTIVE & REAR ELEVATION

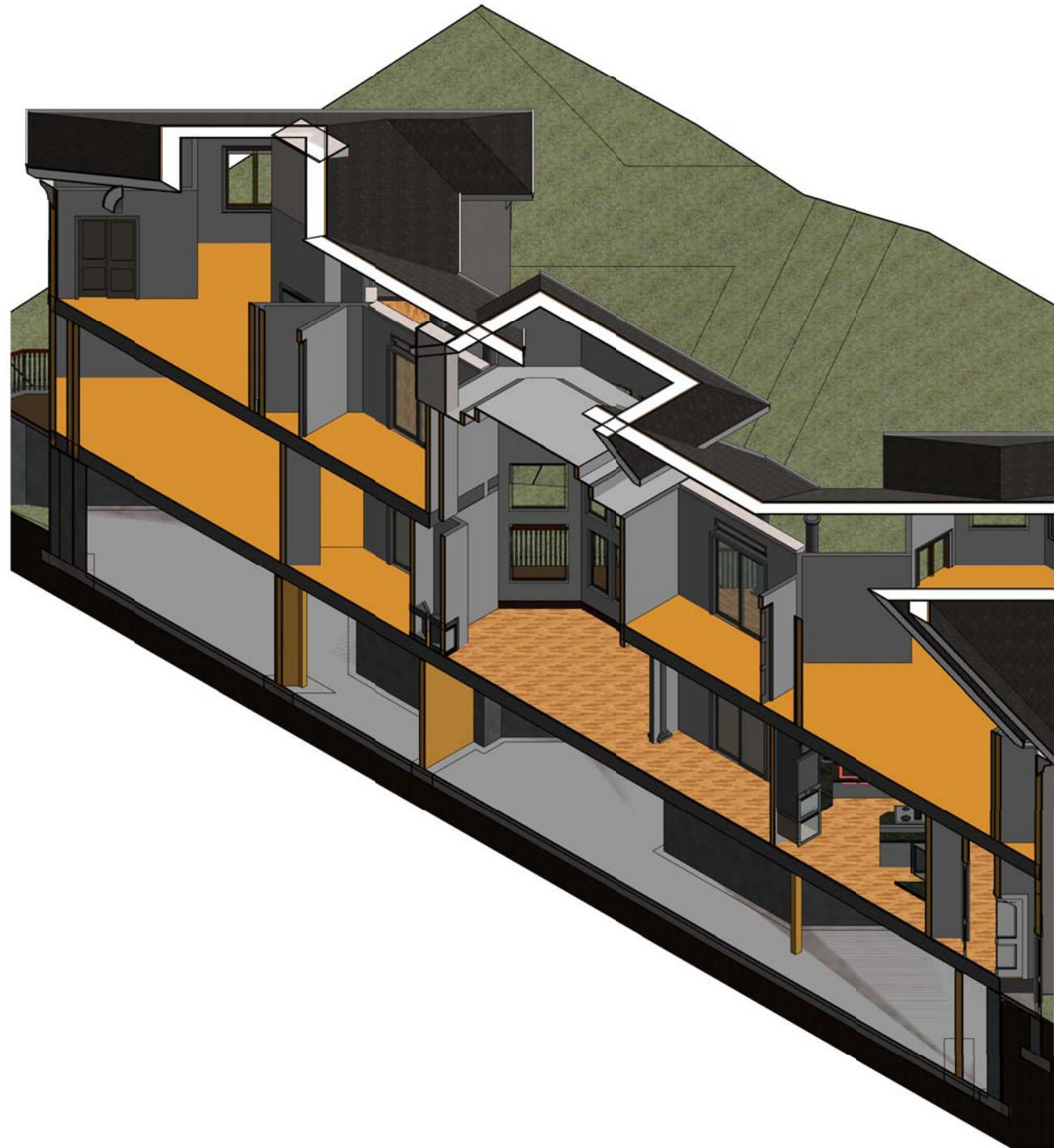
EVERY ATTEMPT HAS BEEN MADE IN THE PREPARATION OF THESE DRAWINGS TO AVOID MISTAKES. THE DESIGNER, OR ANYONE ASSOCIATED WITH THE DESIGNER, WILL NOT BE HELD LIABLE FOR ANY ERRORS OR OMISSIONS IN THESE DRAWINGS

REVISIONS	
NO	DATE/DESCRIPTION

DATE  
PLAN NUMBER

SHEET NUMBER

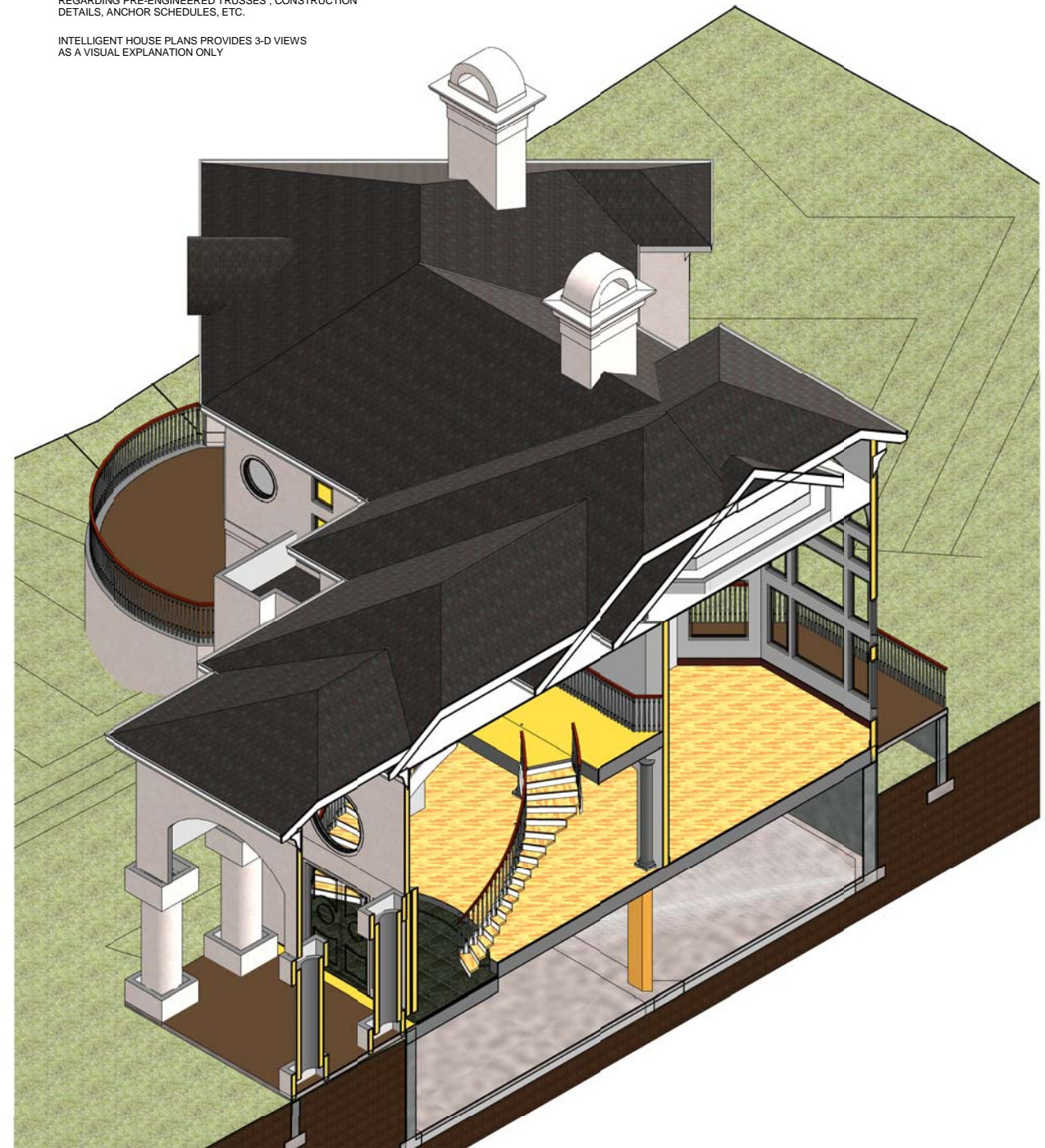
THESE DRAWINGS CAN NOT BE USED, COPIED, TRACED OR REPRODUCED, IN WHOLE OR PART OR MANNER WHAT SO EVER WITHOUT PERMISSION FROM BRIAN J. PILLING, AIA



② INTELLIGENT SECTION 2

REFER TO BOYE ARCHITECTURE DRAWINGS FOR INFORMATION REGARDING PRE-ENGINEERED TRUSSES, CONSTRUCTION DETAILS, ANCHOR SCHEDULES, ETC.

INTELLIGENT HOUSE PLANS PROVIDES 3-D VIEWS AS A VISUAL EXPLANATION ONLY



① INTELLIGENT SECTION 1



BRIAN J. PILLING, AIA  
736 RIDGE POINT DRIVE  
COROLLA, NC 27927  
PHONE 252-202-7550  
obxarchitect@gmail.com  
www.intelligenthouseplans.com

LOCAL PROFESSIONAL'S SEAL

**CHAHAR RESIDENCE**  
INTELLIGENT SECTION

EVERY ATTEMPT HAS BEEN MADE IN THE PREPARATION OF THESE DRAWINGS TO AVOID MISTAKES. THE DESIGNER, OR ANYONE ASSOCIATED WITH THE DESIGNER, WILL NOT BE HELD LIABLE FOR ANY ERRORS OR OMISSIONS IN THESE DRAWINGS

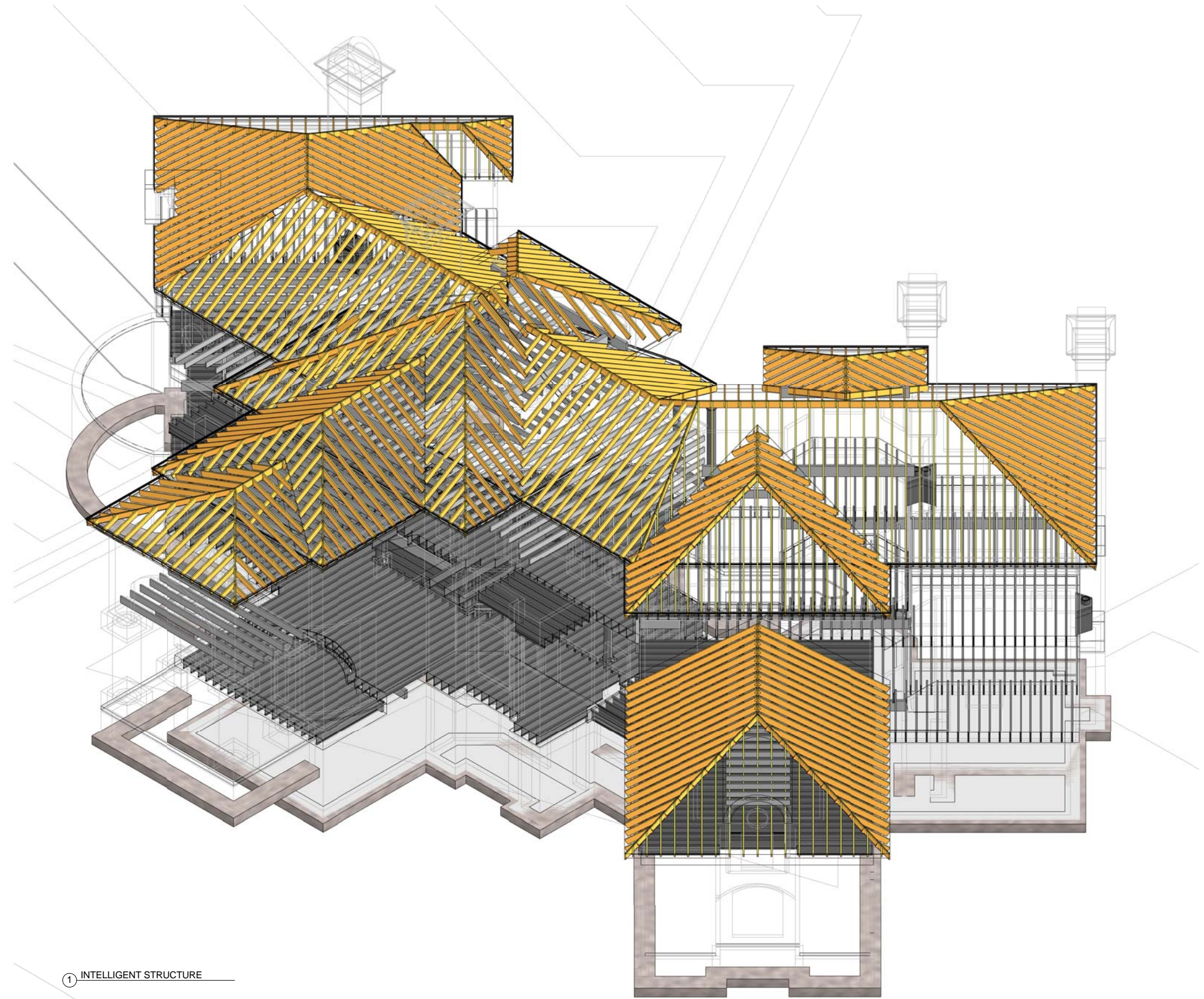
REVISIONS	
NO	DATE/DESCRIPTION

DATE  
PLAN NUMBER

SHEET NUMBER

**IHP-5**

THESE DRAWINGS CAN NOT BE USED, COPIED, TRACED OR REPRODUCED, IN WHOLE OR PART OR MANNER WHAT SO EVER WITHOUT PERMISSION FROM BRIAN J. PILLING, AIA



① INTELLIGENT STRUCTURE



BRIAN J. PILLING, AIA  
736 RIDGE POINT DRIVE  
COROLLA, NC 27927  
PHONE 252-202-7550  
obxarchitect@gmail.com  
www.intelligenthouseplans.com

LOCAL PROFESSIONAL'S SEAL

# CHAHAR RESIDENCE

## INTELLIGENT STRUCTURE

EVERY ATTEMPT HAS BEEN MADE IN THE PREPARATION OF THESE DRAWINGS TO AVOID MISTAKES. THE DESIGNER OR ANYONE ASSOCIATED WITH THE DESIGNER, WILL NOT BE HELD LIABLE FOR ANY ERRORS OR OMISSIONS IN THESE DRAWINGS

REVISIONS	
NO	DATE/DESCRIPTION

DATE  
PLAN NUMBER

SHEET NUMBER

IHP-6

LOCAL PROFESSIONAL'S SEAL

**GOLDEN RESIDENCE**  
 FOUNDATION PLAN

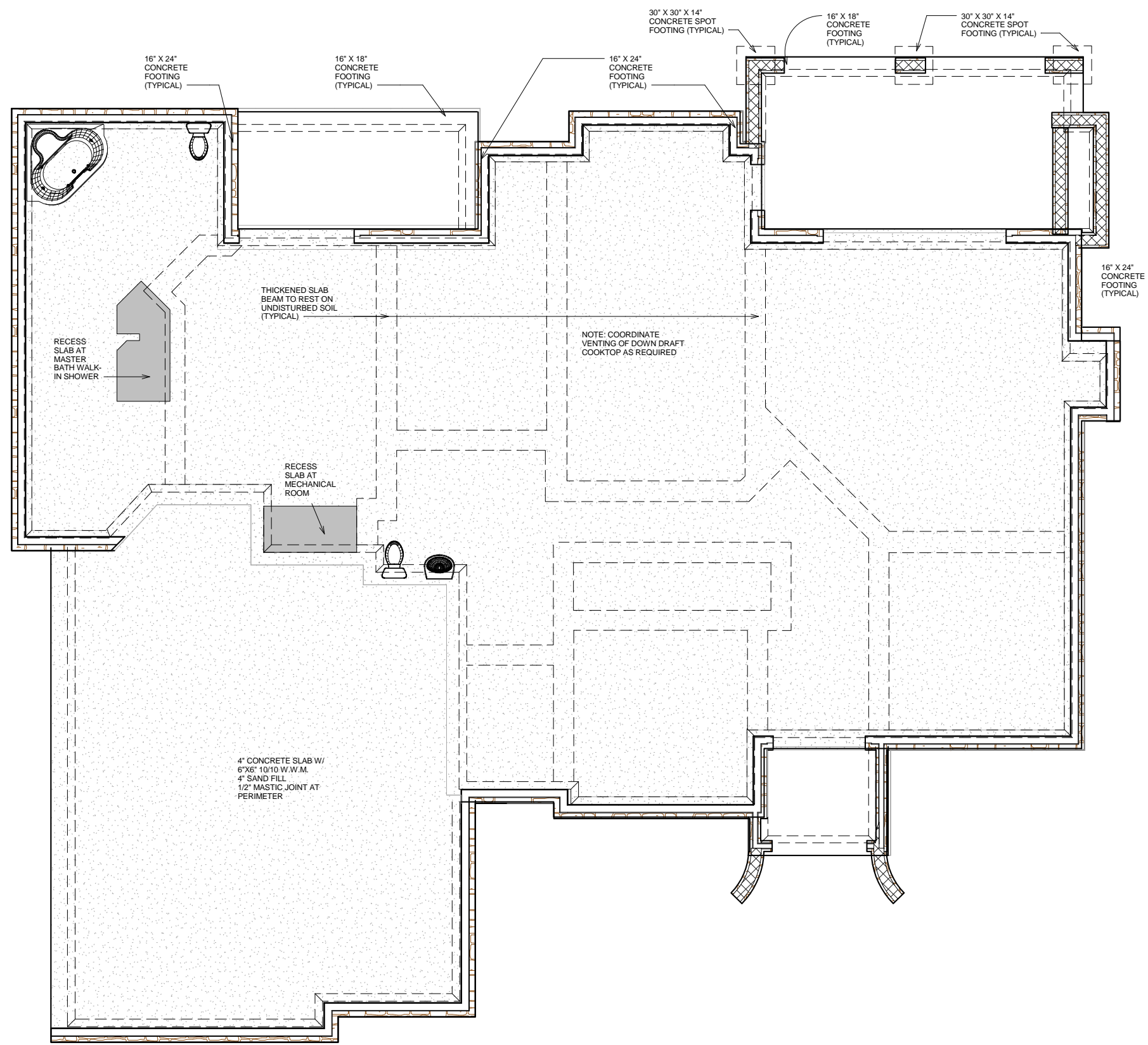
EVERY ATTEMPT HAS BEEN MADE IN THE PREPARATION OF THESE DRAWINGS TO AVOID MISTAKES. THE DESIGNER, OR ANYONE ASSOCIATED WITH THE DESIGNER, WILL NOT BE HELD LIABLE FOR ANY ERRORS OR OMISSIONS IN THESE DRAWINGS.

REVISIONS	
NO.	DATE/DESCRIPTION

DATE  
 PLAN NUMBER

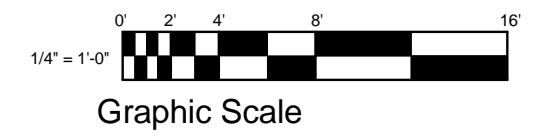
SHEET NUMBER

**IHP 7**



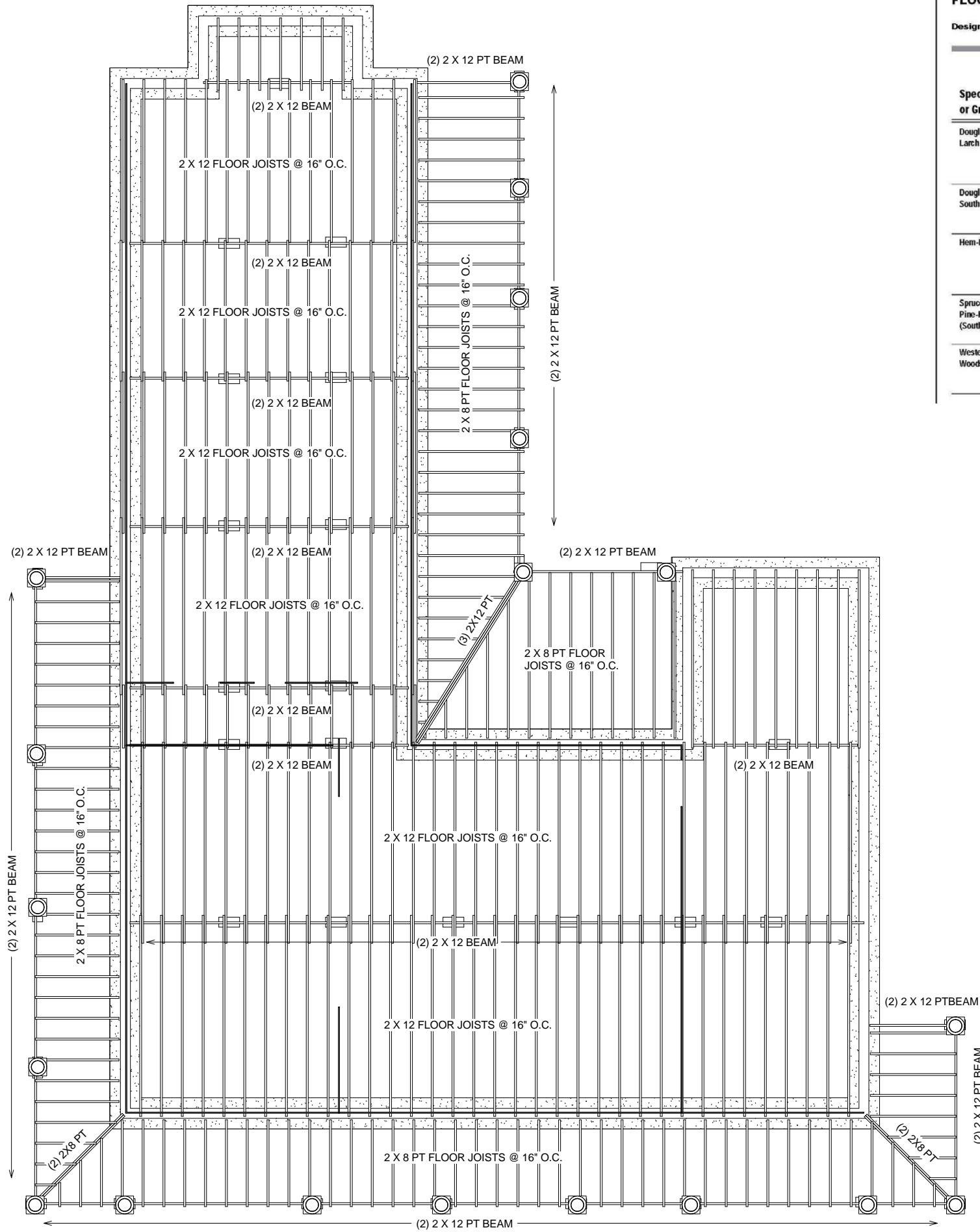
NOTE: FRAMING PLANS ARE PROVIDED AS A CONVENIENCE BASED UPON IHP'S BEST INTERPRETATION OF ORIGINAL DESIGNER'S DRAWINGS & INTENT - ALL FRAMING PLANS SHOULD BE REVIEWED BY LOCAL PROFESSIONAL & PRE-ENGINEERED LUMBER SUPPLIER FOR COMPLIANCE WITH CODE

① FOUNDATION PLAN  
 1/4" = 1'-0"



THESE DRAWINGS CAN NOT BE USED, COPIED, TRACED OR REPRODUCED, IN WHOLE OR PART OR MANNER WHAT SO EVER WITHOUT PERMISSION FROM BRIAN J. PILLING, AIA

THESE DRAWINGS CAN NOT BE USED, COPIED, TRACED OR REPRODUCED, IN WHOLE OR PART OR MANNER WHAT SO EVER WITHOUT PERMISSION FROM BRIAN J. PILLING, AIA



1 FIRST FLOOR FRAMING  
1/4" = 1'-0"

**FLOOR JOISTS**

**40# LIVE LOAD 10# DEAD LOAD L/360**

Table FJ-3

*Design Criteria: Strength - 40 lbs. per sq. ft. live load, plus 10 lbs. per sq. ft. dead load.  
Deflection - Limited in span in inches divided by 360 for live load only.*

Species or Group	Grade	Span (feet and inches)																
		2 x 6				2 x 8				2 x 10				2 x 12				
		spacing on center																
		12"	16"	19.2"	24"	12"	16"	19.2"	24"	12"	16"	19.2"	24"	12"	16"	19.2"	24"	
Douglas Fir-Larch	Sel. Struc.	11-4	10-4	9-8	8-0	15-0	13-7	12-10	11-11	19-1	17-4	16-4	15-2	23-3	21-1	19-10	18-5	
	No.1 & Btr.	11-2	10-2	9-6	8-10	14-8	13-4	12-7	11-8	18-9	17-0	16-0	14-9	22-10	20-9	19-1	17-1	
	No.2	10-11	9-11	9-4	8-8	14-5	13-1	12-4	11-0	18-5	16-5	15-0	13-5	22-0	19-1	17-5	15-7	
	No.3	10-9	9-9	9-2	8-3	14-2	12-9	11-8	10-5	18-0	15-7	14-3	12-9	20-11	18-1	16-6	14-9	
Douglas Fir-South	Sel. Struc.	10-3	9-4	8-9	8-2	13-6	12-3	11-7	10-9	17-3	15-8	14-9	13-8	21-0	19-1	17-11	16-8	
	No.1	10-0	9-1	8-7	7-11	13-2	12-0	11-3	10-6	16-10	15-3	14-5	12-11	20-6	18-4	16-9	15-0	
	No.2	9-9	8-10	8-4	7-9	12-10	11-8	11-0	10-2	16-5	14-11	13-10	12-5	19-11	17-7	16-1	14-4	
	No.3	8-8	7-6	6-10	6-2	11-0	9-6	8-8	7-9	13-5	11-8	10-7	9-6	15-7	13-6	12-4	11-0	
Hem-Fir	Sel. Struc.	10-9	9-9	9-2	8-6	14-2	12-10	12-1	11-3	18-0	16-5	15-5	14-4	21-11	19-11	18-9	17-5	
	No.1 & Btr.	10-6	9-6	9-0	8-4	13-10	12-7	11-10	11-0	17-8	16-0	15-1	14-0	21-6	19-6	18-3	16-4	
	No.1	10-6	9-6	9-0	8-4	13-10	12-7	11-10	10-10	17-8	16-0	14-10	13-3	21-6	16-10	17-2	15-5	
	No.2	10-0	9-1	8-7	7-11	13-2	12-0	11-3	10-2	16-10	15-2	13-10	12-5	20-4	17-7	16-1	14-4	
Spruce-Pine-Fir (South)	Sel. Struc.	10-0	9-1	8-7	7-11	13-2	12-0	11-3	10-6	16-10	15-3	14-5	13-4	20-6	18-7	17-6	16-3	
	No.1	9-9	8-10	8-4	7-9	12-10	11-8	11-0	10-2	16-5	14-11	14-0	12-7	19-11	17-10	16-3	14-7	
	No.2	9-6	8-7	8-1	7-6	12-6	11-4	10-8	9-8	15-11	14-6	13-3	11-10	19-4	16-10	15-4	13-9	
	No.3	8-3	7-2	6-6	5-10	10-5	9-0	8-3	7-5	12-9	11-0	10-1	9-0	14-9	12-10	11-8	10-5	
Western Woods	Sel. Struc.	9-9	8-10	8-4	7-9	12-10	11-8	11-0	10-2	16-5	14-11	14-0	12-9	19-11	18-1	16-6	14-9	
	No.1	9-6	8-7	8-0	7-2	12-6	11-1	10-1	9-0	15-7	13-6	12-4	11-0	18-1	15-8	14-4	12-10	
	No.2	9-2	8-4	7-10	7-2	12-1	11-0	10-1	9-0	15-5	13-6	12-4	11-0	18-1	15-8	14-4	12-10	
	No.3	7-6	6-6	5-11	5-4	9-6	8-3	7-6	6-9	11-8	10-1	9-2	8-3	13-6	11-8	10-8	9-6	

LOCAL PROFESSIONAL'S SEAL

**GOLDEN RESIDENCE**  
FLOOR FRAMING

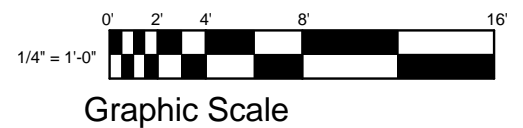
EVERY ATTEMPT HAS BEEN MADE IN THE PREPARATION OF THESE DRAWINGS TO AVOID MISTAKES. THE DESIGNER, OR ANYONE ASSOCIATED WITH THE DESIGNER, WILL NOT BE HELD LIABLE FOR ANY ERRORS OR OMISSIONS IN THESE DRAWINGS.

REVISIONS	
NO	DATE/DESCRIPTION

DATE  
PLAN NUMBER

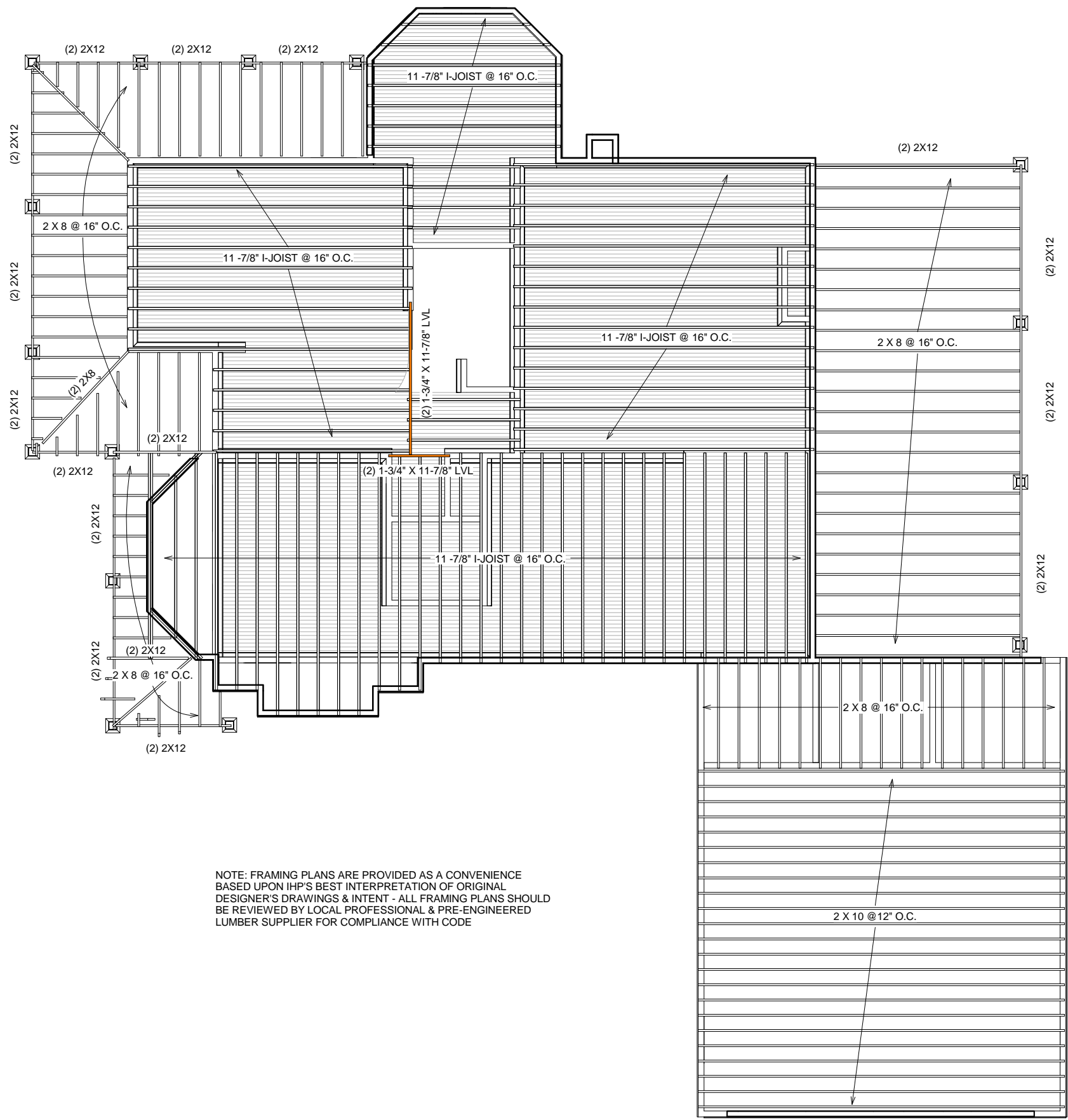
SHEET NUMBER

**IHP-8**





THESE DRAWINGS CAN NOT BE USED, COPIED, TRACED OR REPRODUCED, IN WHOLE OR PART OR MANNER WHAT SO EVER WITHOUT PERMISSION FROM BRIAN J. PILLING, AIA



NOTE: FRAMING PLANS ARE PROVIDED AS A CONVENIENCE BASED UPON IHP'S BEST INTERPRETATION OF ORIGINAL DESIGNER'S DRAWINGS & INTENT - ALL FRAMING PLANS SHOULD BE REVIEWED BY LOCAL PROFESSIONAL & PRE-ENGINEERED LUMBER SUPPLIER FOR COMPLIANCE WITH CODE

1 SECOND FLOOR FRAMING  
1/4" = 1'-0"

**CEILING JOISTS** 20# LIVE LOAD 10# DEAD LOAD L/360

Design Criteria: Strength - 20 lbs. per sq. ft. live load, plus 10 lbs. per sq. ft. dead load  
Deflection - Limited in span in inches divided by 360 for live load only.

Species or Group	Grade	Span (feet and inches)															
		2 x 4				2 x 6				2 x 8				2 x 10			
		12'	16'	19.2'	24'	12'	16'	19.2'	24'	12'	16'	19.2'	24'	12'	16'	19.2'	24'
Douglas Fir-Larch	Sel. Struc.	9-1	8-3	7-9	7-3	14-4	13-0	12-3	11-4	18-10	17-2	16-1	15-0	24-1	21-10	20-7	19-1
	No.1 & Btr.	8-11	8-1	7-8	7-1	14-1	12-9	12-0	11-2	18-6	16-10	15-10	14-9	23-6	21-6	20-2	18-9
	No.2	8-9	8-0	7-6	7-0	13-9	12-6	11-9	10-11	18-2	16-6	15-6	14-2	23-2	21-1	19-5	17-4
	No.3	8-7	7-10	7-4	6-10	13-6	12-3	11-7	10-8	17-10	16-2	15-1	13-6	22-9	20-2	18-5	16-5
	No.3	7-10	6-10	6-2	5-7	11-6	9-11	9-1	8-1	14-7	12-7	11-6	10-3	17-9	15-5	14-1	12-7
Douglas Fir-South	Sel. Struc.	8-3	7-6	7-0	6-6	12-11	11-9	11-1	10-3	17-0	15-6	14-7	13-2	21-9	19-9	18-7	17-3
	No.1	8-0	7-3	6-10	6-4	12-7	11-5	10-9	10-0	16-7	15-1	14-2	13-2	21-2	19-3	18-1	16-6
	No.2	7-10	7-1	6-8	6-2	12-3	11-2	10-6	9-9	16-2	14-8	13-10	12-10	20-9	18-9	17-8	16-0
	No.3	7-7	6-8	6-1	5-5	11-2	9-6	8-10	7-11	14-2	12-4	11-3	10-0	17-4	15-0	13-8	12-3
Hem-Fir	Sel. Struc.	8-7	7-10	7-4	6-10	13-6	12-9	11-7	10-9	17-10	16-2	15-3	14-2	22-9	20-9	19-5	18-0
	No.1 & Btr.	8-5	7-8	7-2	6-8	13-3	12-0	11-4	10-6	17-5	15-10	14-11	13-10	22-3	20-2	19-0	17-8
	No.1	8-5	7-8	7-2	6-8	13-3	12-0	11-4	10-6	17-5	15-10	14-11	13-10	22-3	20-2	19-0	17-1
	No.2	8-0	7-3	6-10	6-4	12-7	11-5	10-9	10-0	16-7	15-1	14-2	13-1	21-2	19-3	18-1	16-0
	No.3	7-8	6-8	6-1	5-5	11-2	9-6	8-10	7-11	14-2	12-4	11-3	10-0	17-4	15-0	13-8	12-3
Spruce-Pine-Fir (South)	Sel. Struc.	8-0	7-3	6-10	6-4	12-7	11-5	10-9	10-0	16-7	15-1	14-2	13-2	21-2	19-3	18-1	16-10
	No.1	7-10	7-1	6-8	6-2	12-3	11-2	10-6	9-9	16-2	14-8	13-10	12-10	20-6	18-9	17-8	16-3
	No.2	7-7	6-11	6-6	6-0	11-11	10-10	10-2	9-6	15-9	14-3	13-5	12-6	20-1	18-3	17-1	15-3
	No.3	7-3	6-4	5-9	5-2	10-6	9-3	8-5	7-6	13-6	11-8	10-6	9-6	16-5	14-3	13-0	11-8
Western Woods	Sel. Struc.	7-10	7-1	6-8	6-2	12-3	11-2	10-6	9-9	16-2	14-8	13-10	12-10	20-6	18-9	17-8	16-5
	No.1	7-7	6-11	6-6	6-0	11-11	10-10	10-2	9-3	15-9	14-3	13-5	12-6	20-1	18-3	17-1	14-3
	No.2	7-4	6-8	6-3	5-10	11-7	10-6	9-10	9-2	15-3	13-10	13-0	11-8	19-5	17-5	15-11	14-3
	No.3	6-8	5-9	5-3	4-6	9-6	8-5	7-8	6-10	12-4	10-8	9-9	8-8	15-0	13-0	11-10	10-7

**L/480 Live Load Deflection**

Depth	TJI®	40 PSF Live Load / 10 PSF Dead Load				40 PSF Live Load / 20 PSF Dead Load			
		12" o.c.	16" o.c.	19.2" o.c.	24" o.c.	12" o.c.	16" o.c.	19.2" o.c.	24" o.c.
9 1/2"	110	16'-11"	15'-6"	14'-7"	13'-7"	16'-11"	15'-6"	14'-3"	12'-9"
	210	17'-9"	16'-3"	15'-4"	14'-3"	17'-9"	16'-3"	15'-4"	14'-0"
	230	18'-3"	16'-8"	15'-9"	14'-8"	18'-3"	16'-8"	15'-9"	14'-8"
	360	20'-2"	18'-5"	17'-4"	15'-9" <sup>(1)</sup>	20'-2"	17'-8"	16'-1" <sup>(1)</sup>	14'-4" <sup>(1)</sup>
11 1/8"	210	21'-1"	19'-3"	18'-2"	16'-11"	21'-1"	19'-3"	17'-8"	15'-9" <sup>(1)</sup>
	230	21'-8"	19'-10"	18'-8"	17'-5"	21'-8"	19'-10"	18'-7"	16'-7" <sup>(1)</sup>
	360	22'-11"	20'-11"	19'-8"	18'-4"	22'-11"	20'-11"	19'-8"	17'-10" <sup>(1)</sup>
	560	26'-1"	23'-8"	22'-4"	20'-9"	26'-1"	23'-8"	22'-4"	20'-9" <sup>(1)</sup>
14"	110	22'-10"	20'-11"	19'-2"	17'-2" <sup>(1)</sup>	22'-2"	19'-2"	17'-6" <sup>(1)</sup>	15'-0" <sup>(1)</sup>
	210	23'-11"	21'-10"	20'-8"	18'-10" <sup>(1)</sup>	23'-11"	21'-1"	19'-2" <sup>(1)</sup>	16'-7" <sup>(1)</sup>
	230	24'-8"	22'-6"	21'-2"	19'-9" <sup>(1)</sup>	24'-8"	22'-2"	20'-3" <sup>(1)</sup>	17'-6" <sup>(1)</sup>
	360	26'-0"	23'-8"	22'-4"	20'-9" <sup>(1)</sup>	26'-0"	23'-8"	22'-4" <sup>(1)</sup>	17'-10" <sup>(1)</sup>
16"	110	29'-6"	26'-10"	25'-4"	23'-6"	29'-6"	26'-10"	25'-4" <sup>(1)</sup>	20'-11" <sup>(1)</sup>
	210	26'-6"	24'-3"	22'-6" <sup>(1)</sup>	19'-11" <sup>(1)</sup>	26'-0"	22'-6" <sup>(1)</sup>	20'-7" <sup>(1)</sup>	16'-7" <sup>(1)</sup>
	230	27'-3"	24'-10"	23'-6"	21'-1" <sup>(1)</sup>	27'-3"	23'-9"	21'-8" <sup>(1)</sup>	17'-6" <sup>(1)</sup>
	360	28'-9"	26'-3"	24'-8" <sup>(1)</sup>	21'-5" <sup>(1)</sup>	28'-9"	26'-3" <sup>(1)</sup>	22'-4" <sup>(1)</sup>	17'-10" <sup>(1)</sup>

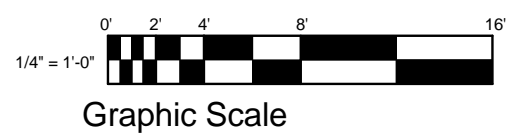
**L/360 Live Load Deflection (Minimum Criteria per Code)**

Depth	TJI®	40 PSF Live Load / 10 PSF Dead Load				40 PSF Live Load / 20 PSF Dead Load			
		12" o.c.	16" o.c.	19.2" o.c.	24" o.c.	12" o.c.	16" o.c.	19.2" o.c.	24" o.c.
9 1/2"	110	18'-9"	17'-2"	15'-8"	14'-0"	18'-1"	15'-8"	14'-3"	12'-9"
	210	19'-8"	18'-0"	17'-0"	15'-4"	19'-8"	17'-2"	15'-8"	14'-0"
	230	20'-3"	18'-6"	17'-5"	16'-2"	20'-3"	18'-1"	16'-6"	14'-9"
	360	22'-3"	19'-4"	17'-8"	15'-9" <sup>(1)</sup>	20'-5"	17'-8"	16'-1" <sup>(1)</sup>	14'-4" <sup>(1)</sup>
11 1/8"	110	23'-4"	21'-2"	19'-4"	17'-3" <sup>(1)</sup>	22'-4"	19'-4"	17'-8"	15'-9" <sup>(1)</sup>
	210	24'-0"	21'-11"	20'-5"	18'-3"	23'-7"	20'-5"	18'-7"	16'-7" <sup>(1)</sup>
	230	25'-4"	23'-2"	21'-10"	20'-4" <sup>(1)</sup>	25'-4"	23'-2"	21'-10" <sup>(1)</sup>	17'-10" <sup>(1)</sup>
	360	28'-10"	26'-3"	24'-9"	23'-0"	28'-10"	26'-3"	24'-9"	20'-11" <sup>(1)</sup>
14"	110	24'-4"	21'-0"	19'-2"	17'-2" <sup>(1)</sup>	22'-2"	19'-2"	17'-6" <sup>(1)</sup>	15'-0" <sup>(1)</sup>
	210	26'-6"	23'-1"	21'-1"	18'-10" <sup>(1)</sup>	24'-4"	21'-1"	19'-2" <sup>(1)</sup>	16'-7" <sup>(1)</sup>
	230	27'-3"	24'-4"	22'-2"	19'-10" <sup>(1)</sup>	25'-8"	22'-2"	20'-3" <sup>(1)</sup>	17'-6" <sup>(1)</sup>
	360	28'-9"	26'-3"	24'-9" <sup>(1)</sup>	21'-5" <sup>(1)</sup>	28'-9"	26'-3" <sup>(1)</sup>	22'-4" <sup>(1)</sup>	17'-10" <sup>(1)</sup>
16"	110	32'-8"	29'-9"	28'-0"	25'-2" <sup>(1)</sup>	32'-8"	29'-9"	26'-3" <sup>(1)</sup>	20'-11" <sup>(1)</sup>
	210	28'-6"	24'-8"	22'-6" <sup>(1)</sup>	19'-11" <sup>(1)</sup>	26'-0"	22'-6" <sup>(1)</sup>	20'-7" <sup>(1)</sup>	16'-7" <sup>(1)</sup>
	230	30'-1"	26'-0"	23'-9"	21'-1" <sup>(1)</sup>	27'-5"	23'-9"	21'-8" <sup>(1)</sup>	17'-6" <sup>(1)</sup>
	360	31'-10"	29'-0"	26'-10" <sup>(1)</sup>	21'-5" <sup>(1)</sup>	31'-10"	28'-10" <sup>(1)</sup>	22'-4" <sup>(1)</sup>	17'-10" <sup>(1)</sup>

(1) Web stiffeners are required at intermediate supports of continuous-span joists when the intermediate bearing length is less than 5/4" and the span on either side of the intermediate bearing is greater than the following spans:

TJI®	40 PSF Live Load / 10 PSF Dead Load				40 PSF Live Load / 20 PSF Dead Load			
	12" o.c.	16" o.c.	19.2" o.c.	24" o.c.	12" o.c.	16" o.c.	19.2" o.c.	24" o.c.
110	N.A.	N.A.	N.A.	15'-4"	N.A.	N.A.	16'-0"	12'-9"
210	N.A.	N.A.	21'-4"	17'-0"	N.A.	21'-4"	17'-9"	14'-2"
230	N.A.	N.A.	N.A.	19'-2"	N.A.	N.A.	19'-11"	15'-11"
360	N.A.	N.A.	24'-5"	19'-6"	N.A.	24'-5"	20'-4"	16'-3"
560	N.A.	N.A.	29'-10"	23'-10"	N.A.	29'-10"	24'-10"	19'-10"

\* Long-term deflection under dead load, which includes the effect of creep, has not been considered. **Bold italic** spans reflect initial dead load deflection exceeding 0.33".



**intelligent houseplans**  
BRIAN J. PILLING, AIA  
736 RIDGE POINT DRIVE  
COROLLA, NC 27927  
PHONE 252-202-7550  
obxarchitect@gmail.com  
www.intelligenthouseplans.com

LOCAL PROFESSIONAL'S SEAL

**ZELCH RESIDENCE**  
SECOND FLOOR FRAMING PLAN

EVERY ATTEMPT HAS BEEN MADE IN THE PREPARATION OF THESE DRAWINGS TO AVOID MISTAKES. THE DESIGNER OR ANYONE ASSOCIATED WITH THE DESIGNER, WILL NOT BE HELD LIABLE FOR ANY ERRORS OR OMISSIONS IN THESE DRAWINGS

REVISIONS	
NO.	DATE/DESCRIPTION

DATE  
PLAN NUMBER

SHEET NUMBER

**CEILING JOISTS**

**20# LIVE LOAD 10# DEAD LOAD L/360**

Table C3-1

**Design Criteria:** Strength - 20 lbs. per sq. ft. live load, plus 10 lbs. per sq. ft. dead load.  
Deflection - Limited in span in inches divided by 360 for live load only.

Species or Group	Grade	Span (feet and inches)															
		2 x 4				2 x 6				2 x 8				2 x 10			
		12"	16"	19.2"	24"	12"	16"	19.2"	24"	12"	16"	19.2"	24"	12"	16"	19.2"	24"
<b>Douglas Fir-Larch</b>	Sel. Struc.	9-1	8-3	7-9	7-3	14-4	13-0	12-3	11-4	18-10	17-2	16-1	15-0	24-1	21-10	20-7	19-1
	No.1 & Btr.	8-11	8-1	7-8	7-1	14-1	12-9	12-0	11-2	18-8	16-10	15-10	14-8	23-8	21-6	20-2	18-9
	No.1	8-9	8-0	7-6	7-0	13-9	12-6	11-9	10-11	18-2	16-6	15-6	14-2	23-2	21-1	19-5	17-4
	No.2	8-7	7-10	7-4	6-10	13-6	12-3	11-7	10-8	17-10	16-2	15-1	13-6	22-9	20-2	18-5	16-5
	No.3	7-10	6-10	6-2	5-7	11-6	9-11	9-1	8-1	14-7	12-7	11-6	10-3	17-9	15-5	14-1	12-7
<b>Douglas Fir-South</b>	Sel. Struc.	8-3	7-6	7-0	6-6	12-11	11-9	11-1	10-3	17-0	15-6	14-7	13-6	21-9	19-9	18-7	17-3
	No.1	8-0	7-3	6-10	6-4	12-7	11-5	10-9	10-0	16-7	15-1	14-2	13-2	21-2	19-3	18-1	16-8
	No.2	7-10	7-1	6-8	6-2	12-3	11-2	10-6	9-9	16-2	14-8	13-10	12-10	20-8	18-9	17-8	16-0
	No.3	7-7	6-8	6-1	5-5	11-2	9-8	8-10	7-11	14-2	12-4	11-3	10-0	17-4	15-0	13-8	12-3
<b>Hem-Fir</b>	Sel. Struc.	8-7	7-10	7-4	6-10	13-6	12-3	11-7	10-9	17-10	16-2	15-3	14-2	22-9	20-8	19-5	18-0
	No.1 & Btr.	8-5	7-8	7-2	6-8	13-3	12-0	11-4	10-6	17-5	15-10	14-11	13-10	22-3	20-2	19-0	17-8
	No.1	8-5	7-8	7-2	6-8	13-3	12-0	11-4	10-6	17-5	15-10	14-11	13-10	22-3	20-2	19-0	17-1
	No.2	8-0	7-3	6-10	6-4	12-7	11-5	10-9	10-0	16-7	15-1	14-2	13-1	21-2	19-3	17-10	16-0
	No.3	7-8	6-8	6-1	5-5	11-2	9-8	8-10	7-11	14-2	12-4	11-3	10-0	17-4	15-0	13-8	12-3
<b>Spruce-Pine-Fir (South)</b>	Sel. Struc.	8-0	7-3	6-10	6-4	12-7	11-5	10-9	10-0	16-7	15-1	14-2	13-2	21-2	19-3	18-1	16-10
	No.1	7-10	7-1	6-8	6-2	12-3	11-2	10-6	9-9	16-2	14-8	13-10	12-10	20-8	18-9	17-8	16-3
	No.2	7-7	6-11	6-6	6-0	11-11	10-10	10-2	9-6	15-9	14-3	13-5	12-6	20-1	18-3	17-1	15-3
	No.3	7-3	6-4	5-9	5-2	10-8	9-3	8-5	7-6	13-6	11-8	10-8	9-6	16-5	14-3	13-0	11-8
<b>Western Woods</b>	Sel. Struc.	7-10	7-1	6-8	6-2	12-3	11-2	10-6	9-9	16-2	14-8	13-10	12-10	20-8	18-9	17-8	16-5
	No.1	7-7	6-11	6-6	6-0	11-11	10-10	10-2	9-3	15-9	14-3	13-0	11-8	20-1	17-5	15-11	14-3
	No.2	7-4	6-8	6-3	5-10	11-7	10-6	9-10	9-2	15-3	13-10	13-0	11-8	19-5	17-5	15-11	14-3
	No.3	6-8	5-9	5-3	4-8	9-8	8-5	7-8	6-10	12-4	10-8	9-9	8-8	15-0	13-0	11-10	10-7

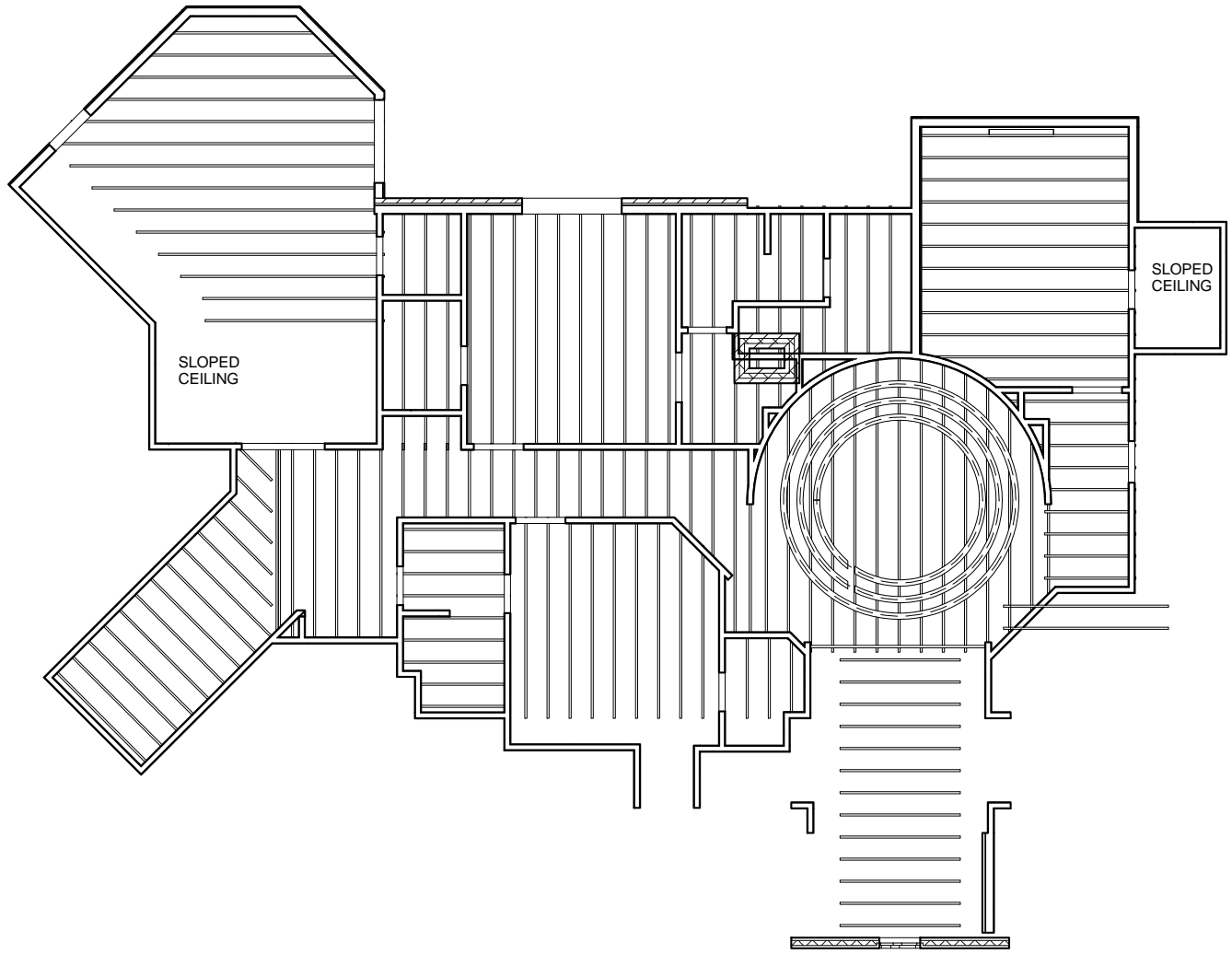
**CEILING JOISTS**

**20# LIVE LOAD 10# DEAD LOAD L/240**

Table C3-2

**Design Criteria:** Strength - 20 lbs. per sq. ft. live load, plus 10 lbs. per sq. ft. dead load.  
Deflection - Limited in span in inches divided by 240 for live load only.

Species or Group	Grade	Span (feet and inches)															
		2 x 4				2 x 6				2 x 8				2 x 10			
		12"	16"	19.2"	24"	12"	16"	19.2"	24"	12"	16"	19.2"	24"	12"	16"	19.2"	24"
<b>Douglas Fir-Larch</b>	Sel. Struc.	10-5	9-6	8-11	8-3	16-4	14-11	14-0	13-0	21-7	19-7	18-6	17-2	27-6	25-0	23-7	21-3
	No.1 & Btr.	10-3	9-4	8-9	8-1	16-1	14-7	13-9	12-3	21-2	19-1	17-5	15-7	26-10	23-3	21-3	19-0
	No.1	10-0	9-1	8-7	7-8	15-9	13-9	12-6	11-2	20-1	17-5	15-10	14-2	24-6	21-3	19-5	17-4
	No.2	9-10	8-11	8-2	7-3	15-0	13-0	11-11	10-8	19-1	16-6	15-1	13-6	23-3	20-2	18-5	16-5
	No.3	7-10	6-10	6-2	5-7	11-6	9-11	9-1	8-1	14-7	12-7	11-6	10-3	17-9	15-5	14-1	12-7
<b>Douglas Fir-South</b>	Sel. Struc.	9-5	8-7	8-1	7-6	14-9	13-5	12-8	11-9	19-6	17-9	16-8	15-6	24-10	22-7	21-3	19-9
	No.1	9-2	8-4	7-10	7-3	14-5	13-1	12-1	10-9	19-0	16-9	15-3	13-8	23-7	20-5	18-8	16-8
	No.2	8-11	8-1	7-8	7-1	14-1	12-8	11-7	10-4	18-6	16-0	14-8	13-1	22-7	19-7	17-10	16-0
	No.3	7-8	6-8	6-1	5-5	11-2	9-8	8-10	7-11	14-2	12-4	11-3	10-0	17-4	15-0	13-8	12-3
<b>Hem-Fir</b>	Sel. Struc.	9-10	8-11	8-5	7-10	15-6	14-1	13-3	12-3	20-5	18-6	17-5	16-2	26-0	23-8	22-3	20-6
	No.1 & Btr.	9-8	8-9	8-3	7-8	15-2	13-9	12-11	11-9	19-11	18-2	16-8	14-11	25-5	22-3	20-4	18-2
	No.1	9-8	8-9	8-3	7-7	15-2	13-7	12-4	11-1	19-10	17-2	15-8	14-0	24-3	21-0	19-2	17-1
	No.2	9-2	8-4	7-10	7-1	14-5	12-8	11-7	10-4	18-6	16-0	14-8	13-1	22-7	19-7	17-10	16-0
	No.3	7-8	6-8	6-1	5-5	11-2	9-8	8-10	7-11	14-2	12-4	11-3	10-0	17-4	15-0	13-8	12-3
<b>Spruce-Pine-Fir (South)</b>	Sel. Struc.	9-2	8-4	7-10	7-3	14-5	13-1	12-4	11-5	19-0	17-3	16-3	15-7	24-3	22-1	20-9	19-3
	No.1	8-11	8-1	7-8	7-1	14-1	12-9	11-9	10-6	18-6	16-3	14-10	13-3	22-11	19-10	18-2	16-3
	No.2	8-8	7-11	7-5	6-9	13-8	12-1	11-0	9-10	17-8	15-4	14-0	12-6	21-7	18-8	17-1	15-3
	No.3	7-3	6-4	5-9	5-2	10-8	9-3	8-5	7-6	13-6	11-8	10-8	9-6	16-5	14-3	13-0	11-8
<b>Western Woods</b>	Sel. Struc.	8-11	8-1	7-8	7-1	14-1	12-9	11-11	10-8	18-8	16-6	15-1	13-6	23-3	20-2	18-5	16-5
	No.1	8-8	7-9	7-0	6-4	13-0	11-3	10-4	9-3	16-6	14-3	13-0	11-8	20-2	17-5	15-11	14-3
	No.2	8-5	7-8	7-0	6-4	13-0	11-3	10-4	9-3	16-6	14-3	13-0	11-8	20-2	17-5	15-11	14-3
	No.3	6-8	5-9	5-3	4-8	9-8	8-5	7-8	6-10	12-4	10-8	9-9	8-8	15-0	13-0	11-10	10-7



1 SECOND FLOOR CEILING FRAMING  
3/16" = 1'-0"

NOTE: FRAMING PLANS ARE PROVIDED AS A CONVENIENCE BASED UPON IHP'S BEST INTERPRETATION OF ORIGINAL DESIGNER'S DRAWINGS & INTENT - ALL FRAMING PLANS SHOULD BE REVIEWED BY LOCAL PROFESSIONAL & PRE-ENGINEERED LUMBER SUPPLIER FOR COMPLIANCE WITH CODE



BRIAN J. PILLING, AIA  
736 RIDGE POINT DRIVE  
COROLLA, NC 27927  
PHONE 252-202-7550  
obxarchitect@gmail.com  
www.intelligenthouseplans.com

LOCAL PROFESSIONAL'S SEAL

LANCASTER RESIDENCE  
CEILING FRAMING PLAN

EVERY ATTEMPT HAS BEEN MADE IN THE PREPARATION OF THESE DRAWINGS TO AVOID MISTAKES. THE DESIGNER, OR ANYONE ASSOCIATED WITH THE DESIGNER, WILL NOT BE HELD LIABLE FOR ANY ERRORS OR OMISSIONS IN THESE DRAWINGS.

REVISIONS	
NO.	DATE/DESCRIPTION

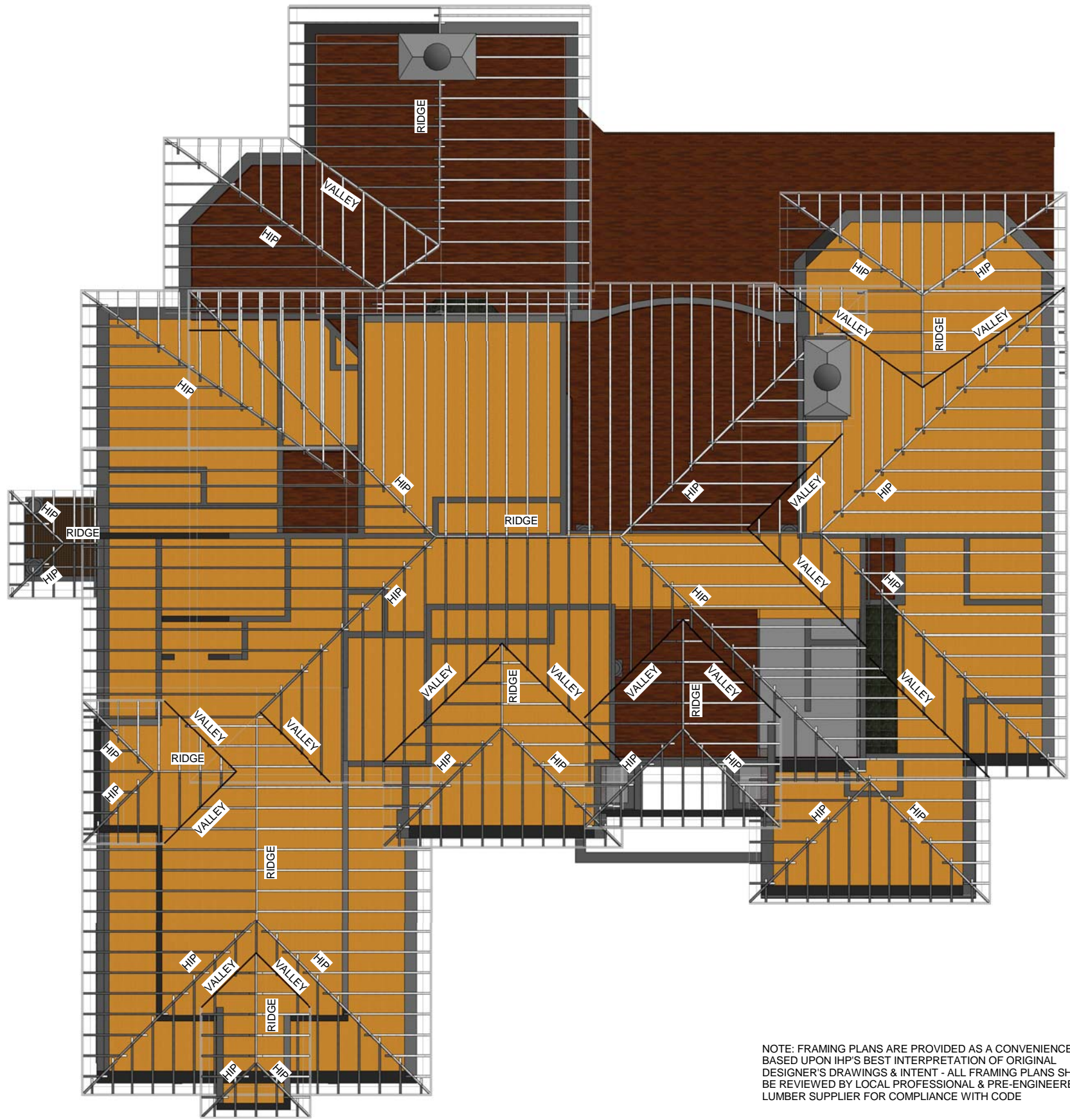
DATE  
PLAN NUMBER

SHEET NUMBER

IHP-10

THESE DRAWINGS CAN NOT BE USED, COPIED, TRACED OR REPRODUCED, IN WHOLE OR PART OR MANNER WHAT SO EVER WITHOUT PERMISSION FROM BRIAN J. PILLING, AIA

THESE DRAWINGS CAN NOT BE USED, COPIED, TRACED OR REPRODUCED, IN WHOLE OR PART OR MANNER WHAT SO EVER WITHOUT PERMISSION FROM BRIAN J. PILLING, AIA



NOTE: FRAMING PLANS ARE PROVIDED AS A CONVENIENCE BASED UPON IHP'S BEST INTERPRETATION OF ORIGINAL DESIGNER'S DRAWINGS & INTENT - ALL FRAMING PLANS SHOULD BE REVIEWED BY LOCAL PROFESSIONAL & PRE-ENGINEERED LUMBER SUPPLIER FOR COMPLIANCE WITH CODE

1 ROOF FRAMING PLAN  
1/4" = 1'-0"

**ROOF RAFTERS**

**20# SNOW LOAD 15# DEAD LOAD L/360**

Table FR-41

*Design Criteria: Strength - 20 lbs. per sq. ft. snow load, plus 15 lbs. per sq. ft. dead load.  
Deflection - Limited in span in inches divided by 360 for live load only.*

Species or Group	Grade	Span (feet and inches)																
		2 x 6				2 x 8				2 x 10				2 x 12				
		spacing on center																
		12'	16'	19.2'	24'	12'	16'	19.2'	24'	12'	16'	19.2'	24'	12'	16'	19.2'	24'	
Douglas Fir-Larch	Sel. Struc.	14-4	13-0	12-3	11-4	18-10	17-2	16-1	15-0	24-1	21-10	20-7	19-1	29-3	26-7	25-0	23-3	
	No.1 & Btr.	14-1	12-9	12-0	11-2	18-6	16-10	15-10	14-8	23-8	21-6	20-2	18-9	28-9	26-1	24-5	21-10	
	No.2	13-9	12-6	11-9	10-11	18-2	16-6	15-6	14-1	23-2	21-1	19-3	17-3	28-2	24-5	22-4	20-0	
	No.3	13-6	12-3	11-7	10-7	17-10	16-2	14-11	13-4	22-9	20-0	18-3	16-4	26-9	23-2	21-2	18-11	
Douglas Fir-South	Sel. Struc.	12-11	11-9	11-1	10-3	17-0	15-6	14-7	13-6	21-9	19-9	18-7	17-3	26-5	24-0	22-7	21-0	
	No.1	12-7	11-5	10-9	10-0	16-7	15-1	14-2	13-2	21-2	19-3	18-1	16-7	25-9	23-5	21-6	19-2	
	No.2	12-3	11-2	10-6	9-9	16-2	14-8	13-10	12-10	20-8	18-9	17-8	15-10	25-1	22-6	20-7	18-5	
	No.3	11-2	9-8	8-10	7-10	14-1	12-2	11-2	10-0	17-3	14-11	13-7	12-2	20-0	17-3	15-9	14-1	
Hem-Fir	Sel. Struc.	13-6	12-3	11-7	10-9	17-10	16-2	15-3	14-2	22-9	20-8	19-5	18-0	27-8	25-1	23-7	21-11	
	No.1 & Btr.	13-3	12-0	11-4	10-6	17-5	15-10	14-11	13-10	22-3	20-2	19-0	17-8	27-1	24-7	23-1	20-11	
	No.2	13-3	12-0	11-4	10-6	17-5	15-10	14-11	13-10	22-3	20-2	19-0	17-0	27-1	24-2	22-0	19-9	
	No.3	12-7	11-5	10-9	10-0	16-7	15-1	14-2	13-0	21-2	19-3	17-9	15-10	25-9	22-6	20-7	18-5	
Spruce-Pine-Fir (South)	Sel. Struc.	12-7	11-5	10-9	10-0	16-7	15-1	14-2	13-2	21-2	19-3	18-1	16-10	25-9	23-5	22-1	20-6	
	No.1	12-3	11-2	10-6	9-9	16-2	14-8	13-10	12-10	20-8	18-9	17-8	16-1	25-1	22-10	20-11	18-8	
	No.2	11-11	10-10	10-2	9-6	15-9	14-3	13-5	12-5	20-1	18-3	16-11	15-2	24-5	21-6	19-8	17-7	
	No.3	10-7	9-2	8-4	7-6	13-4	11-7	10-7	9-5	16-4	14-2	12-11	11-7	18-11	16-5	15-0	13-5	
Western Woods	Sel. Struc.	12-3	11-2	10-6	9-9	16-2	14-8	13-10	12-10	20-8	18-9	17-8	16-4	25-1	22-10	21-2	18-11	
	No.1	11-11	10-10	10-2	9-2	15-9	14-2	12-11	11-7	20-0	17-4	15-10	14-2	23-2	20-1	18-4	16-5	
	No.2	11-7	10-6	9-10	9-2	15-3	13-10	12-11	11-7	19-5	17-4	15-10	14-2	23-2	20-1	18-4	16-5	
	No.3	9-8	8-4	7-7	6-10	12-2	10-7	9-8	8-8	14-11	12-11	11-9	10-7	17-3	15-0	13-8	12-3	



BRIAN J. PILLING, AIA  
736 RIDGE POINT DRIVE  
COROLLA, NC 27927  
PHONE 252-202-7550  
obxarchitect@gmail.com  
www.intelligenthouseplans.com

LOCAL PROFESSIONAL'S SEAL

TURRLINGTON RESIDENCE  
ROOF FRAMING PLAN

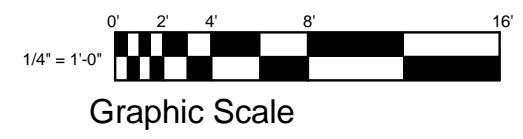
EVERY ATTEMPT HAS BEEN MADE IN THE PREPARATION OF THESE DRAWINGS TO AVOID MISTAKES. THE DESIGNER, OR ANYONE ASSOCIATED WITH THE DESIGNER, WILL NOT BE HELD LIABLE FOR ANY ERRORS OR OMISSIONS IN THESE DRAWINGS

REVISIONS	
NO	DATE/DESCRIPTION

DATE  
PLAN NUMBER

SHEET NUMBER

IHP-11



THESE DRAWINGS CAN NOT BE USED, COPIED, TRACED OR REPRODUCED, IN WHOLE OR PART OR PERMISSION FROM WEBSTER ARCHITECTS, INC. & BRIAN J. PILLING, AIA



BRIAN J. PILLING, AIA  
736 RIDGE POINT DRIVE  
COROLLA, NC 27927  
PHONE 252-202-7550  
obvarchitect@gmail.com  
www.intelligenthouseplans.com

LOCAL PROFESSIONAL'S SEAL

**PFINGSTLER RESIDENCE**  
MATERIAL LIST & SCHEDULES

EVERY ATTEMPT HAS BEEN MADE IN THE PREPARATION OF THESE DRAWINGS TO AVOID MISTAKES. THE DESIGNER, OR ANYONE ASSOCIATED WITH THE DESIGNER, WILL NOT BE HELD LIABLE FOR ANY ERRORS OR OMISSIONS IN THESE DRAWINGS

REVISIONS	
NO	DATE/DESCRIPTION

DATE  
PLAN NUMBER

SHEET NUMBER

Room Schedule								
Name	Area	Perimeter	Floor Finish	Base Finish	Ceiling Finish	Wall Finish	Level	Comments
SPORTS COURT	843 SF	122' - 7 11/16"					LOWER LEVEL	
BEDROOM #6	222 SF	62' - 3 15/16"					LOWER LEVEL	
CLOSET	22 SF	18' - 10"					LOWER LEVEL	
FURNACE	12 SF	14' - 1 31/32"					LOWER LEVEL	
BATH	56 SF	32' - 8"					LOWER LEVEL	
HALL	61 SF	33' - 7 3/16"					LOWER LEVEL	
MECHANICAL	53 SF	32' - 2 1/2"					LOWER LEVEL	
RECREATION ROOM	969 SF	163' - 3 5/8"					LOWER LEVEL	
EXERCISE ROOM	241 SF	63' - 7"					LOWER LEVEL	
CLOSET	7 SF	10' - 10 27/32"					LOWER LEVEL	
CLOSET	6 SF	10' - 5 11/32"					LOWER LEVEL	
WET BAR	115 SF	46' - 3 25/32"					LOWER LEVEL	
MEDIA ROOM	845 SF	146' - 10 1/4"					LOWER LEVEL	
MECHANICAL	35 SF	25' - 11 3/32"					LOWER LEVEL	
CLOSET	6 SF	10' - 3"					LOWER LEVEL	
CLOSET	6 SF	10' - 9 13/32"					LOWER LEVEL	
UNFINISHED	221 SF	73' - 3 1/8"					LOWER LEVEL	
STAIR	86 SF	51' - 8 25/32"					LOWER LEVEL	
HEARTH	211 SF	67' - 0 1/16"					FIRST FLOOR	
BREAKFAST	197 SF	53' - 6 11/32"					FIRST FLOOR	
KITCHEN	271 SF	90' - 6 15/16"					FIRST FLOOR	
PANTRY	14 SF	15' - 2 11/32"					FIRST FLOOR	
STAIR	87 SF	38' - 0 3/4"					FIRST FLOOR	
GALLERY	262 SF	128' - 9 7/8"					FIRST FLOOR	
COATS	10 SF	14' - 1 29/32"					FIRST FLOOR	
POWDER	31 SF	22' - 7 1/2"					FIRST FLOOR	
3 CAR GARAGE	708 SF	110' - 4 5/8"					FIRST FLOOR	
LAUNDRY	75 SF	34' - 10"					FIRST FLOOR	
DINING ROOM	180 SF	53' - 9"					FIRST FLOOR	
LIVING ROOM	342 SF	89' - 9 9/16"					FIRST FLOOR	
FOYER	198 SF	57' - 8"					FIRST FLOOR	
STUDY	217 SF	59' - 4 1/4"					FIRST FLOOR	
SITTING	137 SF	57' - 2 3/8"					FIRST FLOOR	
MASTER BEDROOM	285 SF	69' - 9 11/32"					FIRST FLOOR	
MASTER BATH	189 SF	79' - 11 1/2"					FIRST FLOOR	
TOILET	12 SF	14' - 8 1/2"					FIRST FLOOR	
CLOSET	157 SF	64' - 5 1/2"					FIRST FLOOR	
CLOSET	45 SF	27' - 0 7/8"					FIRST FLOOR	
POWDER	28 SF	21' - 1 15/16"					FIRST FLOOR	
BEDROOM #5	273 SF	88' - 2 1/4"					SECOND FLOOR	
BATH	48 SF	29' - 3 1/2"					SECOND FLOOR	
LOFT	476 SF	112' - 6 3/16"					SECOND FLOOR	
FURNACE	13 SF	16' - 7 11/32"					SECOND FLOOR	
BEDROOM #3	181 SF	53' - 10 3/8"					SECOND FLOOR	
CLOSET	32 SF	22' - 8"					SECOND FLOOR	
BATH	37 SF	24' - 10 21/32"					SECOND FLOOR	
BEDROOM #2	206 SF	67' - 0 11/16"					SECOND FLOOR	
BATH	45 SF	28' - 1 1/2"					SECOND FLOOR	
CLOSET	28 SF	21' - 10 3/32"					SECOND FLOOR	
BEDROOM #4	202 SF	60' - 7 7/32"					SECOND FLOOR	
BATH	58 SF	36' - 5 1/2"					SECOND FLOOR	
CLOSET	42 SF	26' - 2 1/2"					SECOND FLOOR	
CLOSET	3 SF	6' - 11 5/32"					SECOND FLOOR	
CLOSET	21 SF	22' - 2 1/2"					SECOND FLOOR	
HALL	115 SF	69' - 11 1/16"					SECOND FLOOR	
CLOSET	31 SF	27' - 0"					SECOND FLOOR	

NOTE: USE PERIMETER OF EACH ROOM TO DETERMINE QUANTITIES OF BASEBOARD, CROWN MOULDING, WAINSCOT, ETC.  
USE SQUARE FOOTAGES OF EACH ROOM TO DETERMINE QUANTITIES OF FLOORING AS SELECTED BY OWNER

**CONCRETE**

GARAGE SLAB PERIMETER	719 SF
PERIMETER	113 LF
BASEMENT SLAB PERIMETER	3896 SF
PERIMETER	321 LF
FRONT PORCH PERIMETER	80 SF
PERIMETER	38 LF

**WOOD FRAMED FLOORS**

FIRST FLOOR	4106 SF
1-1/8"x4"x8" SUB-FLOOR PERIMETER	129 SHEETS
PERIMETER	326 LF
SECOND FLOOR	2090 SF
1-1/8"x4"x8" SUB-FLOOR PERIMETER	66 SHEETS
PERIMETER	416 LF
REAR PORCH	354 SF

**CEILING GYPSUM BOARD**

6915 SF	1/2" X 4' X 8' 194 SHEETS
5/8" X 4' X 8'	23 SHEETS

**WALL MATERIALS**

PLYWOOD SHEATHING	6470 SF
7/16" X 4' X 8' 203 SHEETS	
AIR INFILTRATION BARRIER	6470 SF
10' X 125' ROLLS 6 ROLLS	
VAPOR BARRIER	6470 SF
10' X 100' ROLLS 7 ROLLS	
GYPSUM WALLBOARD	22,061 SF
1/2" X 4' X 8' 660 SHEETS	
5/8" X 4' X 8' 30 SHEETS	
EIFS (STUCCO)	4654 SF
STONE	1816 SF

**ROOFING MATERIAL**

ROOFING SHINGLES	7400 SF
74 SQUARE	
PLYWOOD SHEATHING	7400 SF
5/8" X 4' X 8' 232 SHEETS	
HIP & RIDGE	5821 LF
19 BUNDLES	

**NOTE:**

REFER TO BUILDING CODE FOR SIZES AND SPANS REQUIRED  
ALL LENGTHS SHOWN ARE CUT LENGTHS PER BIM MODEL

**NOTE:**

IHP RECOMMENDS LOCAL PROFESSIONAL REVIEW FOR CODE REQUIRED LOADS

NOTE: FOUNDATION & FROST WALL SF MUST BE CONFIRMED AGAINST LOCAL SITE CONDITIONS

**NOTES ON TAKE-OFF**

- ALL QUANTITIES ARE PER THE BUILDING INFORMATION MODEL
- NO ALLOWANCE HAS BEEN MADE FOR MATERIAL WASTE OR MISCELLANEOUS BLOCKING, COLLAR TIES, BRACES, ETC.
- ALL QUANTITIES SHOULD BE DOUBLE CHECKED BY CONTRACTOR & VERIFIED AGAINST FIELD CONDITIONS
- CONSTRUCTION METHODS VARY - MATERIAL ORDERING MUST ACCOUNT FOR MOST ECONOMICAL LENGTHS OF MATERIALS
- IHP HAS MADE ITS BEST EFFORT TO MODEL THE BLUEPRINTS AS PROVIDED BY THE ORIGINAL DESIGNER & ARE SUBJECT TO THE SAME RESTRICTIONS NOTED ON THOSE DOCUMENTS

**WALLS**

2X4 EXTERIOR	847 LF
2X4 X 8'	182
2X4 X 9'	292
2X4 X 10'	305
2X4 X 12'	28
2X4 X 14'	40

2X4 X 16' PT SOLE PLATES	30
2X4 X 16' PLATES	159

2X4 INTERIOR	1045 LF
2X4X4'	20
2X4X8'	110
2X4X9'	915

2X4 X 16' PT SOLE PLATES	24
2X4 X 16' PLATES	238

2X8 INTERIOR	80 LF
2X8X9'	80

2X4 X 16' PLATES & FIRESTOPS 20

NOTE: FOUNDATION WALLS, GRADE BEAMS & BRICK VENEER MAY VARY DEPENDING UPON SITE CONDITIONS

- 1 STUD PER LF OF WALL
- SOLE PLATES TO BE PRESSURE TREATED IN CONTACT WITH CONCRETE OR MASONRY
- DOUBLE TOP PLATE
- INTERIOR FIRESTOPS PER CODE

Door Schedule			
Mark	Type	Width	Height
1	72" x 80"	6' - 0"	6' - 8"
2	60" x 84"	5' - 0"	7' - 0"
3	28" x 80"	2' - 4"	6' - 8"
4	36" x 80"	3' - 0"	6' - 8"
5	60" x 96" FRENCH	5' - 0"	8' - 0"
6	48" x 80" PAIR	4' - 0"	6' - 8"
7	24" x 80"	2' - 0"	6' - 8"
8	24" x 80"	2' - 0"	6' - 8"
9	24" x 80"	2' - 0"	6' - 8"
10	32" x 80"	2' - 8"	6' - 8"
11	36" x 80" PAIR	3' - 0"	6' - 8"
12	24" x 80"	2' - 0"	6' - 8"
13	36" x 80"	3' - 0"	6' - 8"
14	16/0x7/0	16' - 0"	7' - 0"
15	9/0x7/0	9' - 0"	7' - 0"
16	36" x 96" FRENCH	3' - 0"	8' - 0"
17	18" x 80"	1' - 6"	6' - 8"
18	30" x 80"	2' - 6"	6' - 8"
19	24" x 80"	2' - 0"	6' - 8"
20	24" x 80"	2' - 0"	6' - 8"
21	30" x 80"	2' - 6"	6' - 8"
22	24" x 80"	2' - 0"	6' - 8"
23	28" x 80"	2' - 4"	6' - 8"
24	48" x 80" PAIR	4' - 0"	6' - 8"
25	60" x 80"	5' - 0"	6' - 8"
26	30" x 80"	2' - 6"	6' - 8"
27	24" x 80"	2' - 0"	6' - 8"
28	28" x 80"	2' - 4"	6' - 8"
29	30" x 80"	2' - 6"	6' - 8"
30	24" x 80"	2' - 0"	6' - 8"
31	28" x 80"	2' - 4"	6' - 8"
32	36" x 80"	3' - 0"	6' - 8"
33	36" x 80" PAIR	3' - 0"	6' - 8"
34	36" x 80" PAIR	3' - 0"	6' - 8"
35	30" x 80"	2' - 6"	6' - 8"
36	30" x 80"	2' - 6"	6' - 8"
37	24" x 80"	2' - 0"	6' - 8"
38	24" x 80"	2' - 0"	6' - 8"
39	6080 PATIO	3' - 0"	8' - 0"
40	28" x 80"	2' - 4"	6' - 8"
41	36" x 80" PAIR	3' - 0"	6' - 8"
42	30" x 80"	2' - 6"	6' - 8"
43	24" x 80"	2' - 0"	6' - 8"
44	36" x 80"	3' - 0"	6' - 8"
45	24" x 80"	2' - 0"	6' - 8"
46	32" x 80"	2' - 8"	6' - 8"

**2 X RAFTERS**

2'	95
3'	44
4'	52
5'	66
6'	37
7'	23
8'	19
9'	20
10'	41
11'	20
12'	23
13'	30
14'	27
15'	28
16'	19
17'	21
18'	8
19'	20
20'	6
21'	20
22'	7
23'	1
24'	3
25'	1
26'	1
27'	5

LF HIP	433 LF
LF VALLEY	253 LF
LF RIDGE	149 LF

Window Schedule				
Type Mark	Rough Width	Rough Height	Type	Count
A	3' - 2 3/4"	6' - 8 3/4"	3268	3
AA	2' - 8 3/4"	1' - 4 3/4"	2816 TRANSOM	2
B	1' - 4 3/4"	6' - 8 3/4"	1468 SIDELIGHT	2
C	2' - 4 3/4"	4' - 8 3/4"	2448	6
D	2' - 0 3/4"	4' - 8 3/4"	2048	1
E	2' - 4 3/4"	4' - 2 3/4"	2442	6
F	2' - 8 3/4"	6' - 8 3/4"	2868	9
G	3' - 0 3/4"	7' - 6 3/4"	3076	5
H	2' - 4 3/4"	7' - 6 3/4"	2476	3
I	3' - 4 3/4"	7' - 6 3/4"	3476	8
J	2' - 4 3/4"	6' - 8 3/4"	2468	2
K	2' - 0 3/4"	6' - 8 3/4"	2068	4
L	4' - 8 3/4"	6' - 8 3/4"	4868	1
M	2' - 4 3/4"	6' - 0 3/4"	2460	7
N	2' - 0 3/4"	5' - 4 3/4"	2054	1
O	2' - 4 3/4"	4' - 0 3/4"	2440	6
P	3' - 2 3/4"	4' - 8 3/4"	3248	1
Q	2' - 4 3/4"	5' - 4 3/4"	2454	1
R	3' - 4 3/4"	4' - 4 3/4"	3444	4
S	2' - 0 3/4"	6' - 0 3/4"	2060	6
T	2' - 8 3/4"	6' - 0 3/4"	2860	2
U	6' - 0 3/4"	4' - 0 3/4"	6040 TRANSOM	1
V	1' - 4 3/4"	4' - 0 3/4"	1440 TRANSOM	2
W	6' - 0 1/2"	3' - 0 1/2"	6040 ARCHTOP TRANSOM	1
X	6' - 8 1/2"	3' - 4 1/2"	6834 ARCHTOP TRANSOM	1
Y	2' - 0 3/4"	1' - 4 3/4"	2016 TRANSOM	6
Z	2' - 4 3/4"	1' - 6 3/4"	2416 TRANSOM	2

Grand total: 93

NOTE: COORDINATE ROUGH OPENINGS WITH FINAL WINDOW SELECTIONS BY OWNER & MANUFACTURER

**2X6 CEILING JOISTS**

2'	2
4'	2
5'	7
6'	30
7'	38
8'	29
9'	10
10'	2
11'	3
12'	2
14'	20

**L-JOISTS**

2'	1
3'	1
4'	1
5'	1
6'	9
7'	13
8'	7
9'	12
10'	49
11'	20
12'	10